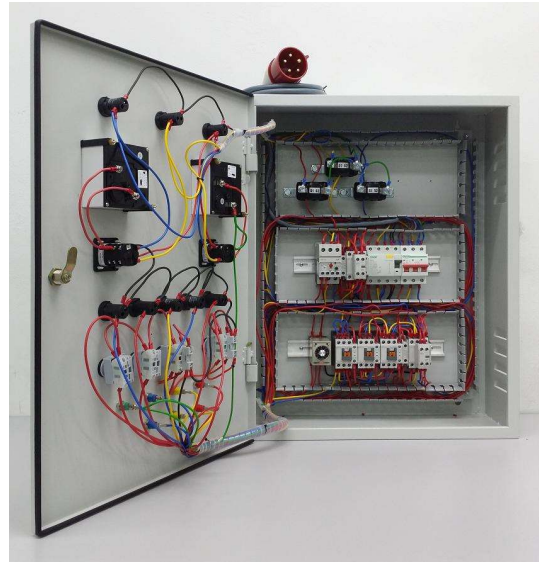


STAR DELTA STARTER

EM-50-10-06-02

EDU-LABS



Specifications

Input Section

- 415VAC, 30A, 3 phase, 50Hz via input 5 core cable with 3 phase 5 pin AC Socket CEE 32A

Controls, Protections and Instruments Section

- Mushroom Head Emergency Stop Button : AC 300V, 3A, 22mm, LED 220VAC
- Flat-Head Push-Button Switch : AC 300V, 3A, 22mm, RED, GREEN
- LED Indicator : 240V AC, 22mm, RED, GREEN
- Miniature Circuit Breaker : 3Pole, 240/415 V, 10 A, 50/60 Hz
- Earth Leakage Circuit Breaker : 4Poles, 415 V, $I_n = 40$ A, $I_{\Delta n} = 300$ mA
- Thermal Overload Relay : 5-8 A adjustable
- Magnetic Contactor : 3 Pole, 220 V- 13A, 440V- 9A, 7.5 HP
- Auxiliary Contact Block : Front Mount 2 Pole Block
- Single-Range Analogue Timer : 240V AC, 50 HZ, 0-30 S adjustable, AH3-2
- Three Phase Induction Motor : 5.5HP, 4Pole, 1435 rpm, $V_{\Delta} = 415$ V, $I_{\Delta} = 7.9$ A (Optional Item)
- Ammeter Selector Switch : Single pole, 20A, 440V
- Voltmeter Selector Switch : 3 ϕ to neutral, 20A, 440V
- Analogue AC Ammeter : 30A
- Analogue AC Voltmeter : 0~500VAC
- Current Transformer : 30/5 A, 5VA

Panel Board

- Panel Mounted type for each starter position to provide real industrial experience.
- Heavy sheet steel console with hinged section front covers, Baked epoxy powder finished.
- All Motor Starter with clear label & symbol.

Accessories

- Literature
- Operation / Instruction manual

Note: Due to products continuous development process, layout and specification may change without prior notices.