

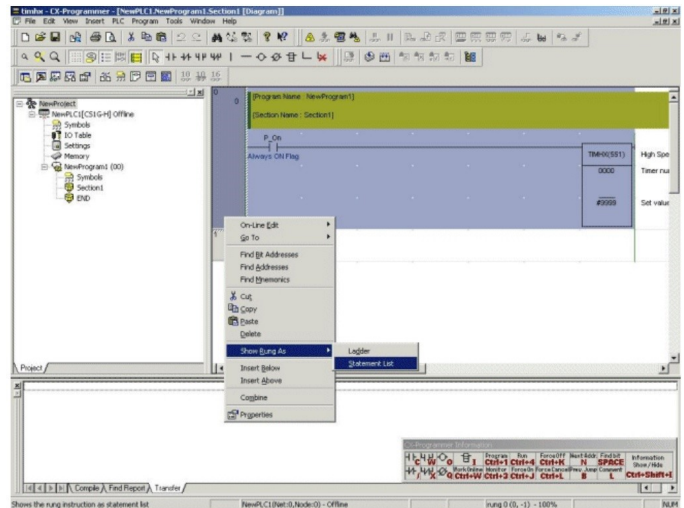
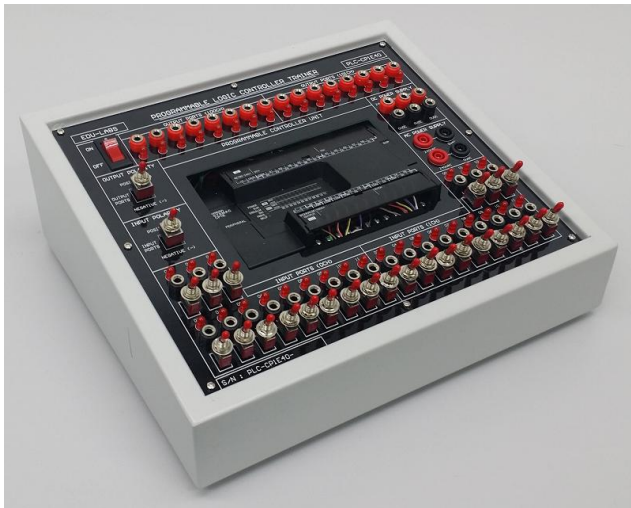
Programmable Logic Controller Trainer



PLC-CP1E40

EDU-LABS

RIATAN MALAYSIA



Features

The EDU-LABS Programmable Logic Controller Trainer is powerful and flexible systems ideally suited to your specialized needs. Omron is a leader in industrial automation and many factories commonly use their products. The systems in our trainers are compatible with a variety of accessories and peripherals, thus allowing them to be easily expanded into larger systems. This trainer is suitable for the students to develop competence in operating, programming, and troubleshooting modern PLC control circuits. Several models of trainers are available in different sizes. These trainers are Basic Training Package, intermediate training package and advanced training package according to their difficulty level and equipments needed. A student experiment manual is provided to guide the student through the experiments. The experiments are chosen to cover the topics from basic familiarization of the PLC up to programming and applications.

Specifications

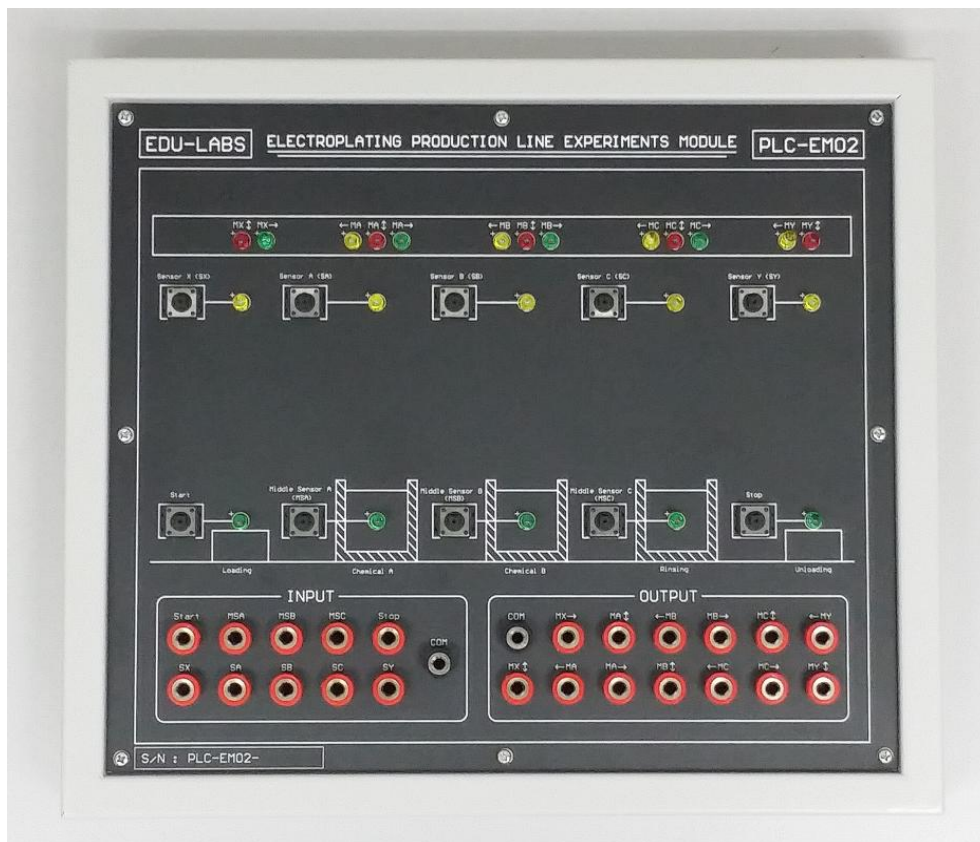
- PLC module OMRON CP1E-E40SDR-A with built-in 24 inputs and 16 outputs (Relay Output Type)
- PLC module with which 24 Input & 16 Outputs Binding Post socket for external interface
- Programming USB port with programming cable
- 24VDC Power Supply Module
- 240VAC Power Supply Module
- 24 integrated INPUT PORT with toggle switches & Bi-Directional LED Lamp indicators
- 16 integrated OUTPUT PORT with Bi-Directional LED Lamp indicators
- INPUT PORT Polarity Module
- OUTPUT PORT Polarity Module
- Operation voltage: 240VAC, 50Hz, 5A Fused Protected
- PLC Programming software GX-One (Student Evaluation Version)
- Manual in CD complete with examples sample programs
- USB Programming Cable
- 3 Pin Power Cord

Expansion Experiments Modules (Optional)

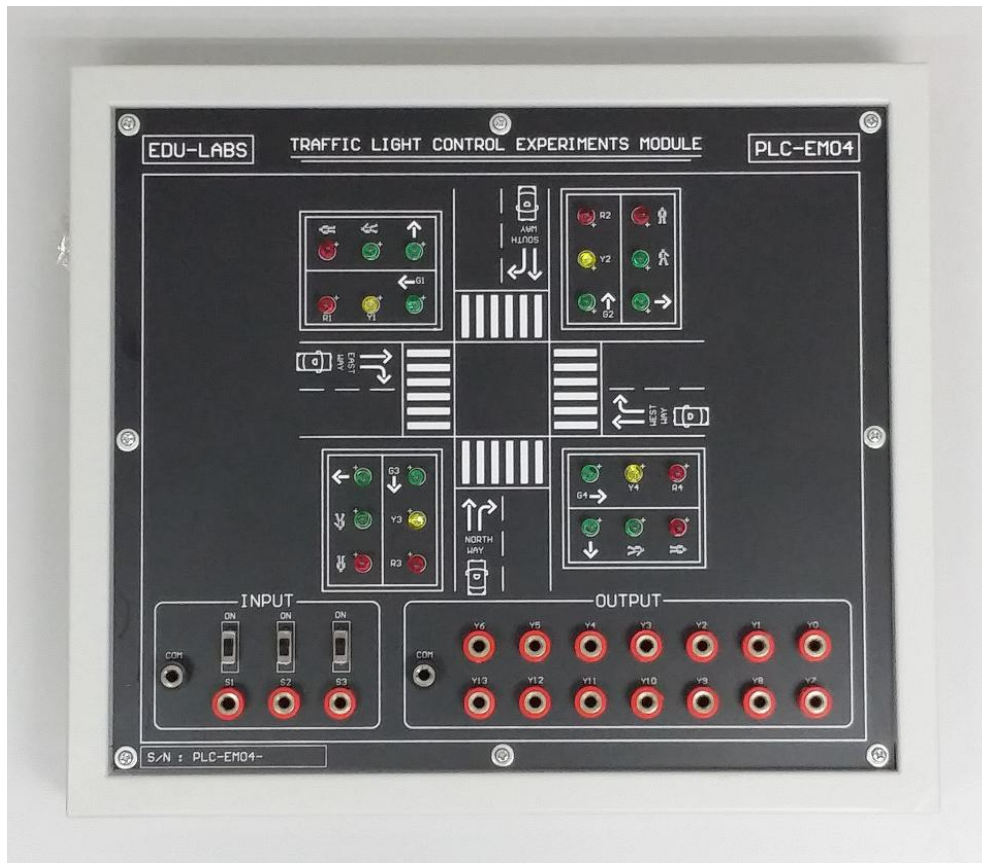
1. Automatic Washing Machine Experiments Module : PLC-EM01



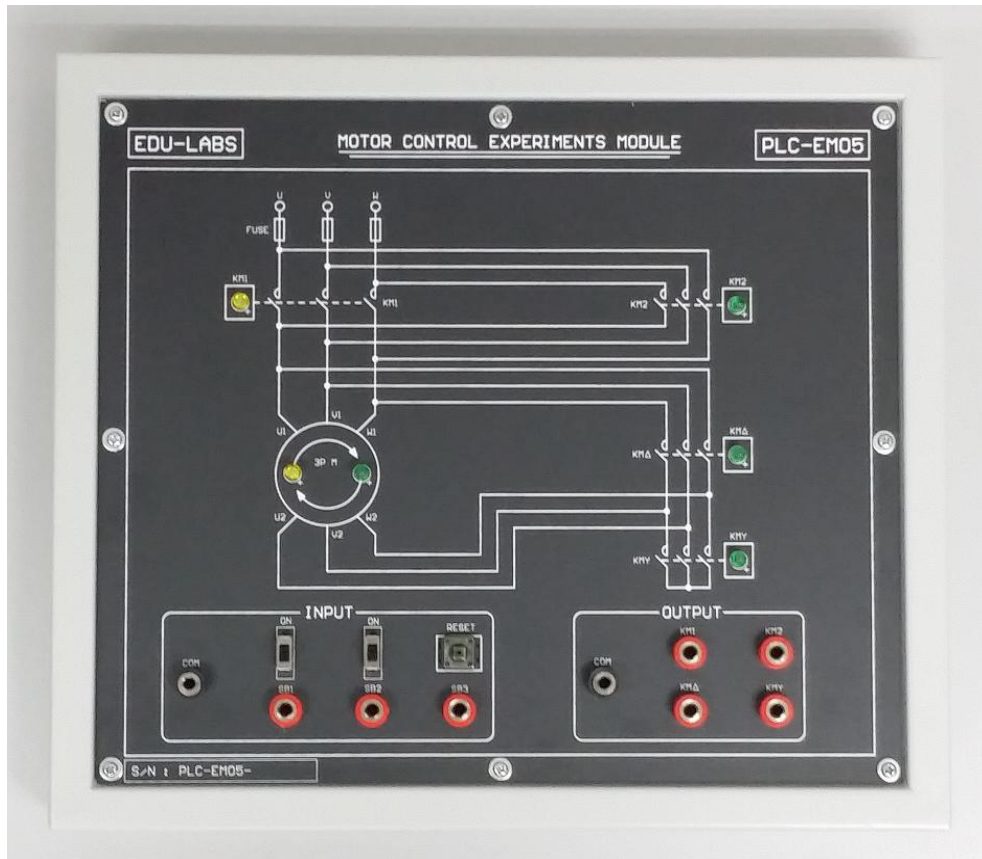
2. Electroplating Production Line Experiments Module PLC-EM02



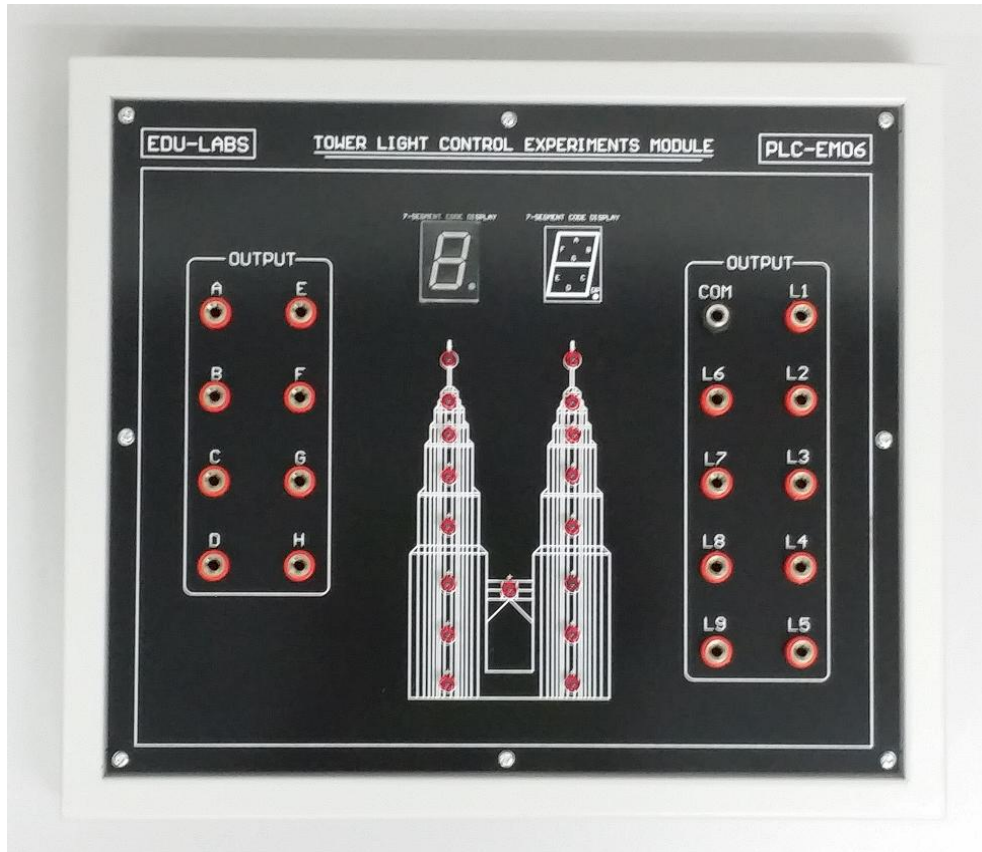
3. Traffic Lights Automatic & Manual Control Experiments Module PLC-EM04



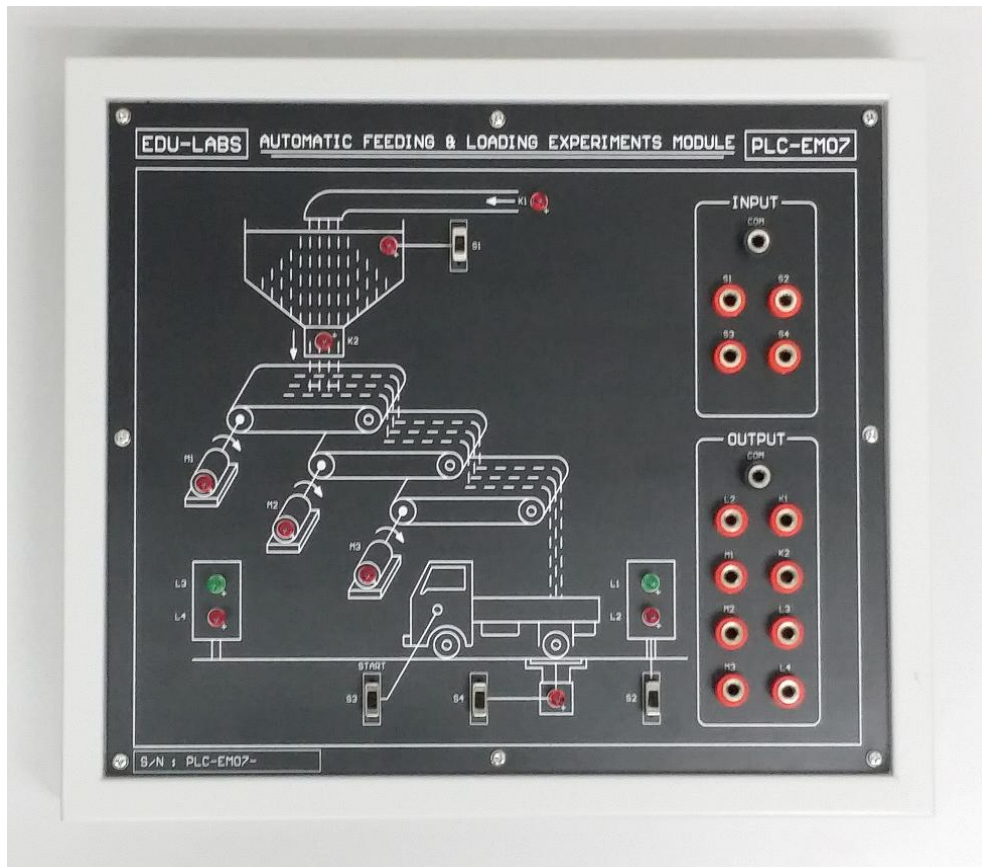
4. Motor control Experiments Module PLC-EM05



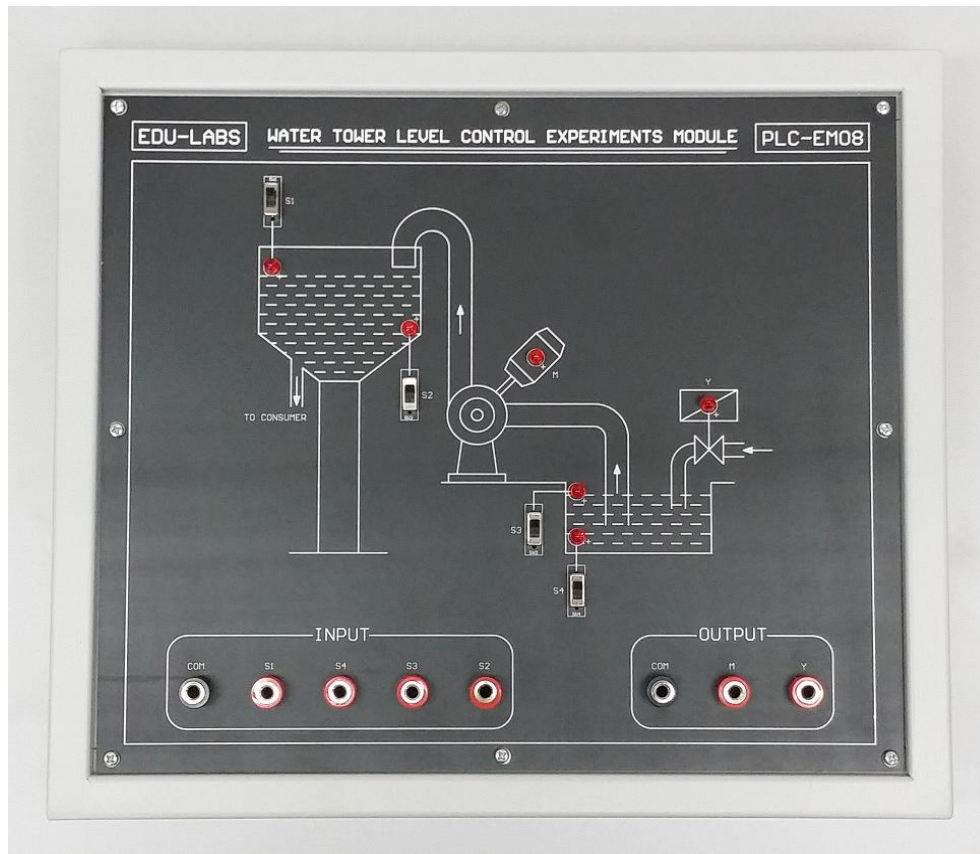
5. Tower Lights Control Experiments Module PLC-EM06



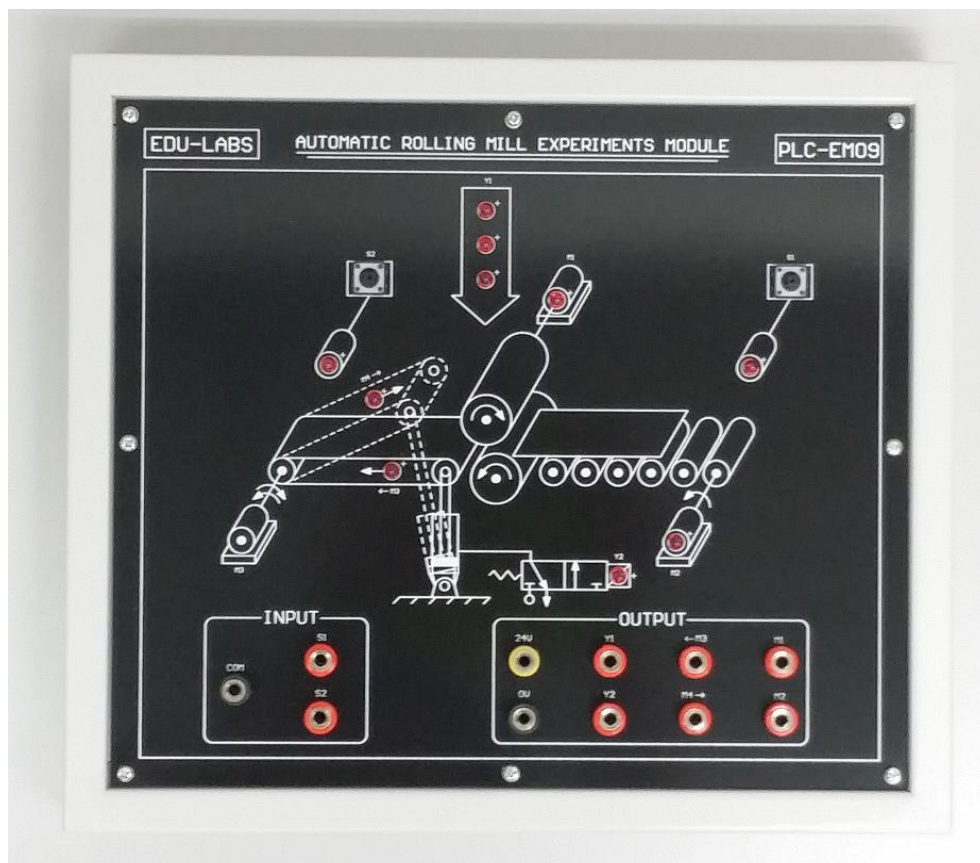
6. Vehicle Automatic Feeding & Loading Experiments Module PLC-EM07



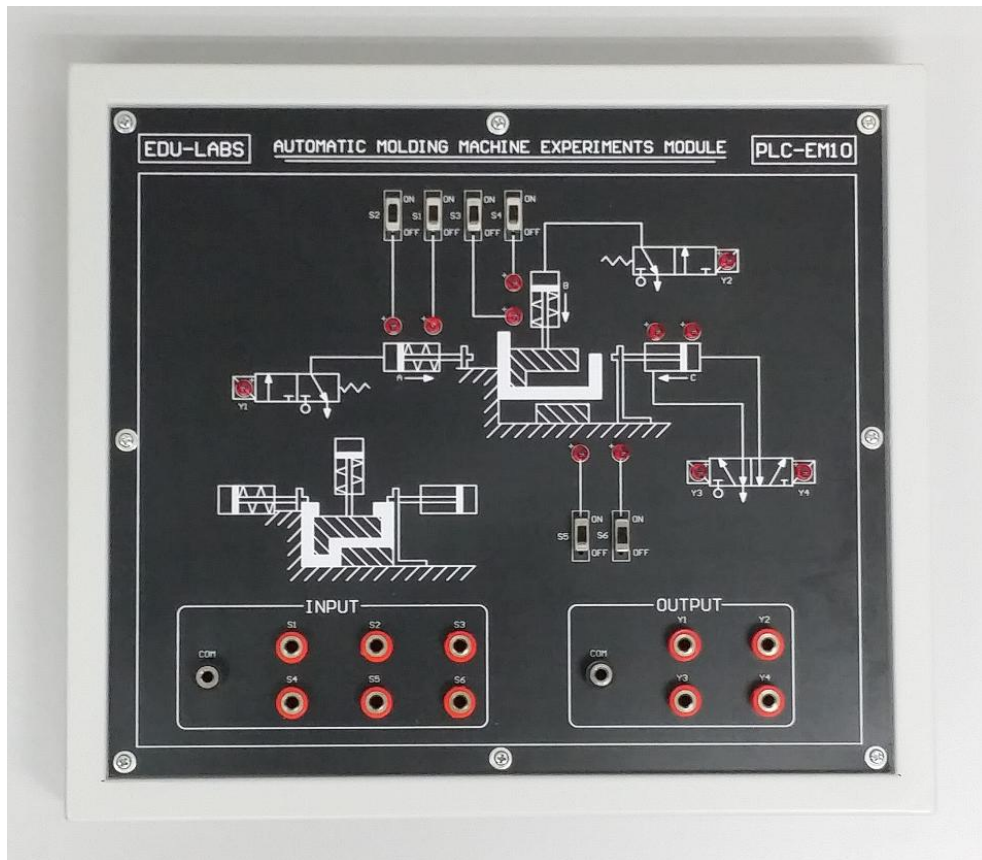
7. Water Tower Level Control Experiments Module PLC-EM08



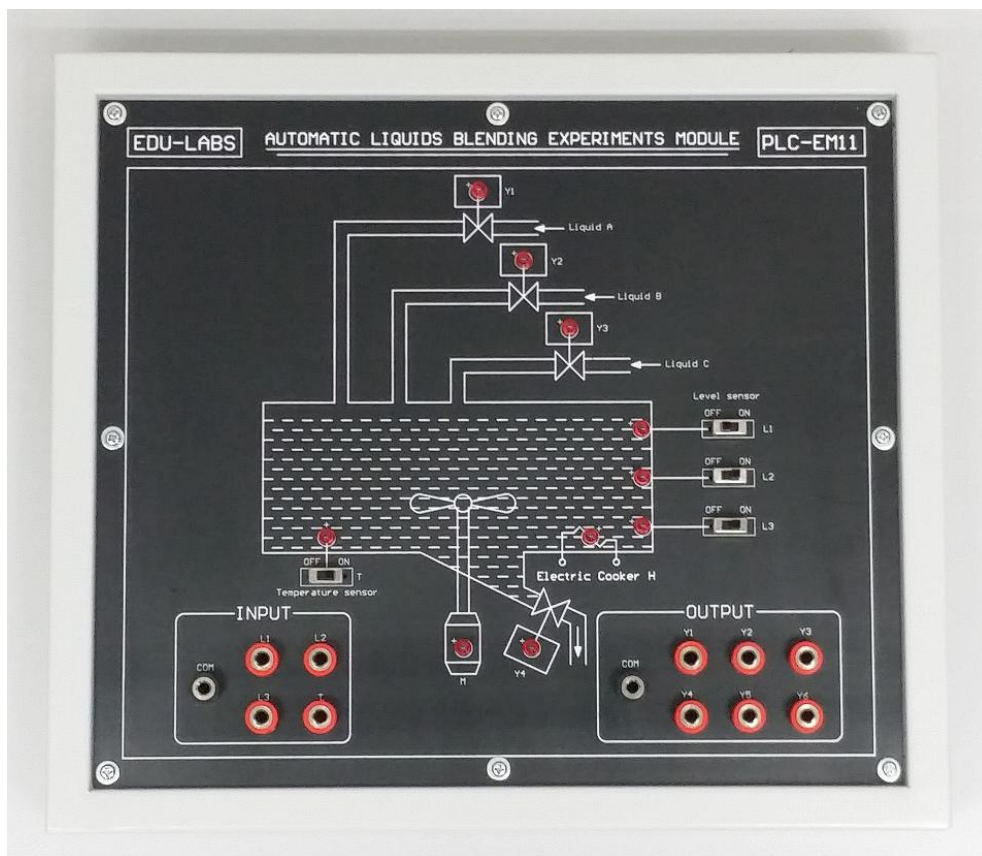
8. Automatic Rolling Mill Experiments Module PLC-EM09



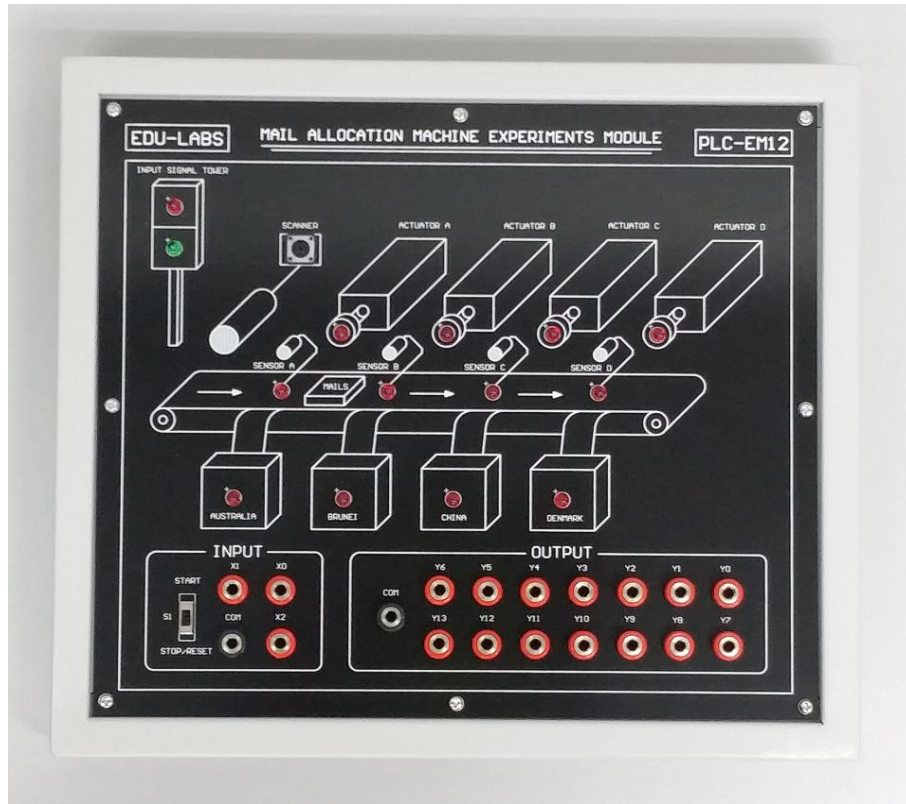
9. Automatic Molding Machine Experiments Module PLC-EM10



10. Automatic Liquids Blending Experiments Module PLC-EM11



11. Mails Allocation Machine Experiments Module PLC-EM12



12. 4-Storey Elevator Control Experiments Module PLC-EM13



Note: Specification, Layout, Design etc. May Change Without Prior Notice For Products Continuous Development Process.