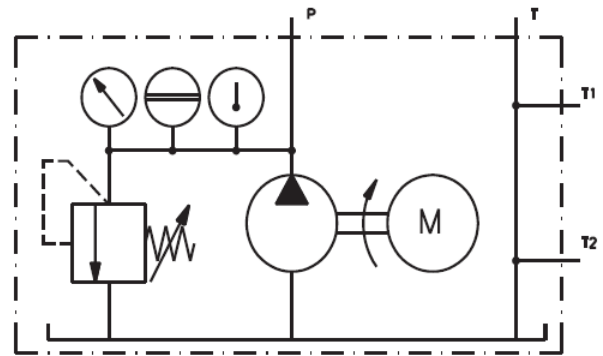


HYDRAULIC POWER PACK UNIT

20020

EDU-LABS



Including the following parts:

- 1HP Single Phase Electric Hydraulic Motor
- Gear Pump
- Drive Coupling
- Oil Level Gauge with Thermometer
- Breather Cap
- Strainer
- Return Line Filter C/W Pressure Gauge
- One Way Check Valve
- Double Solenoid Directional Control Valve
- Modular Relief Valve
- Pressure Gauge (0~150Bar / 0~3500psi)
- Circuit Manifold
- 15 Liters Reservoir Tank
- Hydraulic Oil
- Castor Wheel With Lock
- All Port complete With Quick coupling Fitting

ALL PRODUCT, PRODUCT SPECIFICATIONS AND DATA ARE SUBJECT TO CHANGE WITHOUT NOTICE TO IMPROVE RELIABILITY, FUNCTION OR DESIGN OR OTHERWISE.