

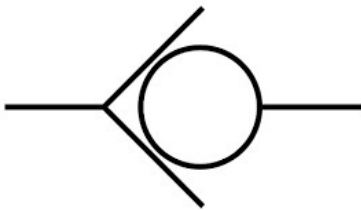
CHECK VALVE MODULE

20208

EDU-LABS



- Pressure range: 0 ~ 120 kgf/cm²
- Flow rate : 19 l/min
- One way flow Direction
- Operating pressure : 60 kgf/cm²
- All Port complete With Quick coupling Fitting
- Mounting bracket With Plug Board Pin (8 Nos)



ALL PRODUCT, PRODUCT SPECIFICATIONS AND DATA ARE SUBJECT TO CHANGE WITHOUT NOTICE TO IMPROVE RELIABILITY, FUNCTION OR DESIGN OR OTHERWISE.