

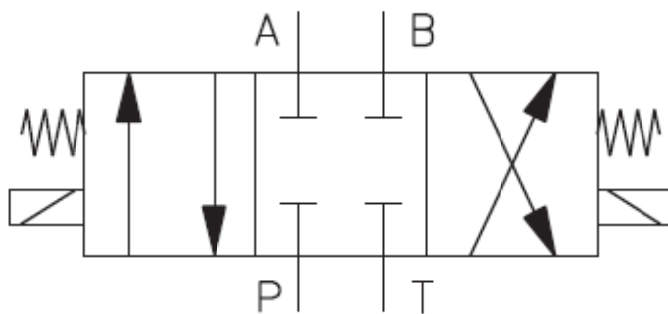
4/3 WAY DOUBLE SOLENOID DIRECTIONAL CONTROL VALVE MODULE (PABT BLOCKED)

20403

EDU-LABS



- Pressure range: 0 ~ 120 kgf/cm²
- Operating pressure: 60 kgf/cm²
- Power consumption: 12W
- Power: DC 24V
- LED and protection circuit
- All Port complete With Quick coupling Fitting
- Mounting bracket With Plug Board Pin



ALL PRODUCT, PRODUCT SPECIFICATIONS AND DATA ARE SUBJECT TO CHANGE WITHOUT NOTICE TO IMPROVE RELIABILITY, FUNCTION OR DESIGN OR OTHERWISE.