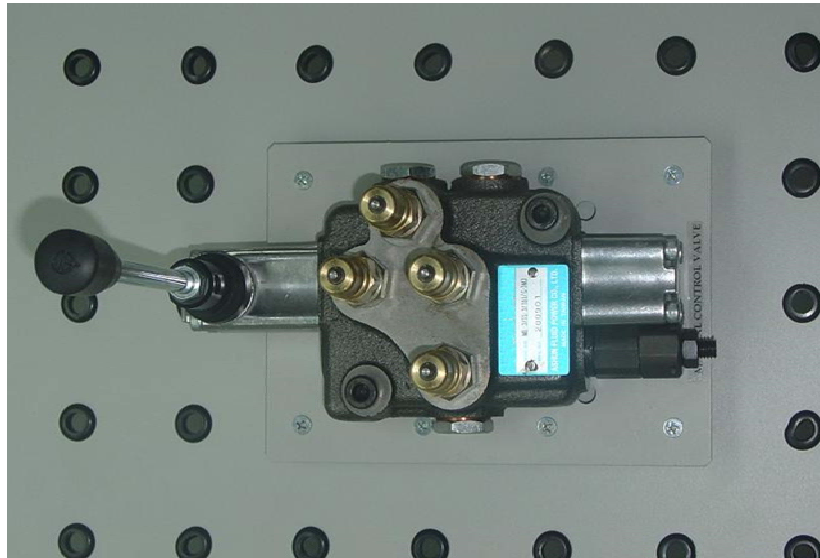


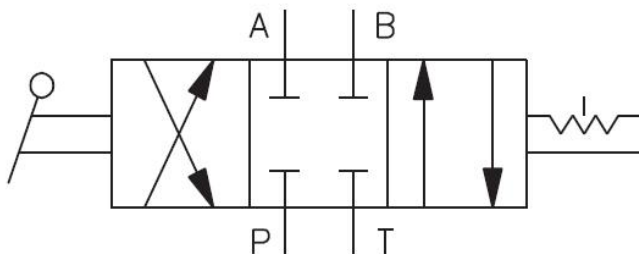
4/3 WAY DIRECTIONAL HAND LEVEL CONTROL VALVE MODULE

20310

EDU-LABS



- Pressure Range : 0~120kgF/cm²
- Flow : 45 L/min
- Maximum Pressure : 210 bar
- Control : Hand Level
- Spool Control : Spring return to center
- Spool Type : Single spool, double acting, 3 positions with PABT Blocked.
- All Port complete With Quick coupling Fitting
- Mounting bracket With Plug Board Pin (8 Nos)



ALL PRODUCT, PRODUCT SPECIFICATIONS AND DATA ARE SUBJECT TO CHANGE WITHOUT NOTICE TO IMPROVE RELIABILITY, FUNCTION OR DESIGN OR OTHERWISE.