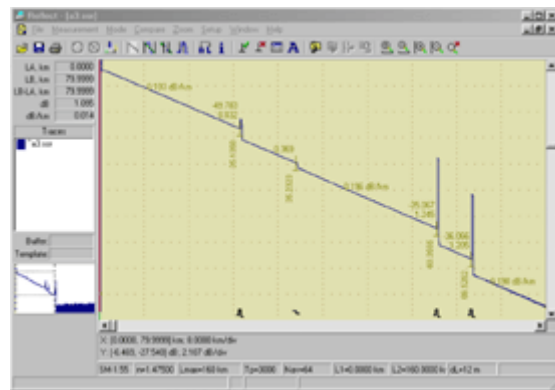


The OTDR-2-2 is a mini PC-Based OTDR measures attenuation in fiber optic cables and splices in those fibers as well as length and distance to fault locations. This OTDR is perfect for the construction and maintenance of cable plants and as an educational tool. The OR-2-2 is accurate enough for laboratory use, but rugged enough for field applications. The OR-2-2 consists of a compact and rugged mainframe with individual plug-in units for measuring of multimode or single-mode fiber. Plug-ins are available either as single or dual wavelengths. A windows base PC or laptop are used to control the OR-2-2. Compatible operating systems are DOS or Windows 95/98/NT. The software is capable of displaying, storing, reading, printing and analyzing several traces at the same time. The "Template" mode allows a reduction in time of the analyses and certification of the fiber links.



PC based OTDR

AD 110	ST Connector Adaptor
AD 120	FC Connector Adaptor
AD 130	SC Connector Adaptor
AD 210	LC Connector Adaptor
AD 100	Universal 2.5mm-Fits ST/SC/FC



Optical Fiber	Multi mode			Single mode		
	Wavelength, nm>	850	1300	850/1300	1310	1550
Dynamic range (SNR=1), dB	28	27	27/26	36	35	36/35
Event dead zone, m	3					
Attenuation dead zone, m	25			13		
Pulse width, ns	10...1000			10...20000		
Distance range, km	2, 5, 10, 20, 40, 80, 120, 160, 240					
Loss resolution, dB	0.001					
Distance accuracy, m	$\pm (0.5+5 \cdot 10^{-5} \cdot L+(\delta n/n) \cdot L)$					
Refractive index range setting	1.0000...2.0000					
Optical connector type	FC, ST, SC,SMA,D4					
Supply voltage, V	Storage battery Pb (Lead Acid)					
Consumed power, W	20					
Size, mm	290x250x56					
Weight, kg	5					
Maintenance Specifications						
Operation Temperature	0° .. +40° C					
Relative Humidity	95% without condensation					
Atmosphere Pressure	84 .. 106,7 kPa					